

Museum Data Collections: Changing Representations and the Production of New Knowledge

Morgan Daniels
Doctoral Candidate
University of Michigan
School of Information

Study background

- *What is the relationship between museum objects, their representations, and research use?*
- Comparative case study: The Kelsey Museum of Archaeology and The University of Michigan Herbarium
 - 15 researcher and 5 staff interviews per site
 - Analysis of museum records

Kelsey Museum of Archaeology

- Artifacts first acquired in 1893 by Francis W. Kelsey
- University sponsored excavations began in 1924
- First curator appointed 1928

Representations: Accessions book

Current Number	Original Number	Name	Locality	Number of Specimens
✓ 1	177	Fragment of Christian lamp	Carthage	
✓ 2	171	Fragment of Roman lamp	"	
✓ 3	117	Fragment of lamp - MNOVIVS	"	
✓ 4	179	Fragment of lamp	"	
✓ 5	103	Fragment of lamp	"	
✓ 6	118	Fragment of lamp	"	
✓ 7	119	Roman lamp - C L L O : S V C ¹⁷ 10.117	"	
✓ 8	120	Roman lamp -	"	
✓ 9	116	Fragment of lamp - Head of Jupiter	"	
✓ 10	115	Fragment of lamp - Gladiators	"	
✓ 11	127	Greek lamp	"	
✓ 12	154	Lamp in Greek form	"	
✓ 13	155	Greek lamp	"	
14	156	Greek lamp	"	
✓ 15	157	Greek lamp	"	

Representations: Accessions book

Current number

Current Number	Original Number	Name	Locality	Number of Specimens
✓ 1	177	Fragment of Christian lamp	Carthage	
✓ 2	171	Fragment of Roman lamp	"	
✓ 3	117	Fragment of lamp - MN OVVS	"	
✓ 4	179	Fragment of lamp	"	
✓ 5	103	Fragment of lamp	"	
✓ 6	118	Fragment of lamp	"	
✓ 7	119	Roman lamp - C L L O SVC ¹⁷ 10 117	"	
✓ 8	120	Roman lamp -	"	
✓ 9	116	Fragment of lamp - Head of Jupiter	"	
✓ 10	115	Fragment of lamp - Gladiators	"	
✓ 11	127	Greek lamp	"	
✓ 12	154	Lamp in Greek form	"	
✓ 13	155	Greek lamp	"	
14	156	Greek lamp	"	
✓ 15	157	Greek lamp	"	

Representations: Accessions book

Original number

Current Number	Original Number	Name	Locality	Number of Specimens
✓ 1	177	Fragment of Christian lamp	Carthage	
✓ 2	171	Fragment of Roman lamp	"	
✓ 3	117	Fragment of lamp - MNOVIVS	"	
✓ 4	179	Fragment of lamp	"	
✓ 5	103	Fragment of lamp	"	
✓ 6	118	Fragment of lamp	"	
✓ 7	119	Roman lamp - C L L O : S V C ¹⁷ 10 117	"	
✓ 8	120	Roman lamp -	"	
✓ 9	116	Fragment of lamp - Head of Jupiter	"	
✓ 10	115	Fragment of lamp - Gladiators	"	
✓ 11	127	Greek lamp	"	
✓ 12	154	Lamp in Greek form	"	
✓ 13	155	Greek lamp	"	
14	156	Greek lamp	"	
✓ 15	157	Greek lamp	"	

Representations: Accessions book

Name

Current Number	Original Number	Name	Locality	Number of Specimens
✓ 1	177	Fragment of Christian lamp	Carthage	
✓ 2	171	Fragment of Roman lamp	"	
✓ 3	117	Fragment of lamp - MNOVIVS	"	
✓ 4	179	Fragment of lamp	"	
✓ 5	103	Fragment of lamp	"	
✓ 6	118	Fragment of lamp	"	
✓ 7	119	Roman lamp - C L L O : S V C [30, 117]	"	
✓ 8	120	Roman lamp -	"	
✓ 9	116	Fragment of lamp - Head of Jupiter	"	
✓ 10	115	Fragment of lamp - Gladiators	"	
✓ 11	127	Greek lamp	"	
✓ 12	154	Lamp in Greek form	"	
✓ 13	155	Greek lamp	"	
14	156	Greek lamp	"	
✓ 15	157	Greek lamp	"	

Representations: Accessions book

Locality

Current Number	Original Number	Name	Locality	Number of Specimens
✓ 1	177	Fragment of Christian lamp	Carthage	
✓ 2	171	Fragment of Roman lamp	"	
✓ 3	117	Fragment of lamp - MNOVIVS	"	
✓ 4	179	Fragment of lamp	"	
✓ 5	103	Fragment of lamp	"	
✓ 6	118	Fragment of lamp	"	
✓ 7	119	Roman lamp - C L L O : S V C [30, 117]	"	
✓ 8	120	Roman lamp -	"	
✓ 9	116	Fragment of lamp - Head of Jupiter	"	
✓ 10	115	Fragment of lamp - Gladiators	"	
✓ 11	127	Greek lamp	"	
✓ 12	154	Lamp in Greek form	"	
✓ 13	155	Greek lamp	"	
14	156	Greek lamp	"	
✓ 15	157	Greek lamp	"	

Representations: Accessions book

Number of Specimens

Current Number	Original Number	Name	Locality	Number of Specimens
✓ 1	177	Fragment of Christian lamp	Carthage	
✓ 2	171	Fragment of Roman lamp	"	
✓ 3	117	Fragment of lamp - MNOVIVS	"	
✓ 4	179	Fragment of lamp	"	
✓ 5	103	Fragment of lamp	"	
✓ 6	118	Fragment of lamp	"	
✓ 7	119	Roman lamp - C L L O : S V C ^{17, 10, 117}	"	
✓ 8	120	Roman lamp -	"	
✓ 9	116	Fragment of lamp - Head of Jupiter	"	
✓ 10	115	Fragment of lamp - Gladiators	"	
✓ 11	127	Greek lamp	"	
✓ 12	154	Lamp in Greek form	"	
✓ 13	155	Greek lamp	"	
14	156	Greek lamp	"	
✓ 15	157	Greek lamp	"	

Current Number	Original Number	Name	Locality	Number of Specimens
✓ 1	177	Fragment of Christian lamp	Carthage	

quod.lib.umich.edu/k/kelsey/x-0000.00.0001/1?back=back1340737279;lasttype=boolean;...

Kelsey Museum Artifacts Database

advanced search portfolios

full-image description

new window | back to results | << previous item | Problems/comments about this item?

bookmark:
<http://quod.lib.umich.edu/k/kelsey/x-0000.00.0001/1>

add to portfolio

Carthage; Lamp; Fragment; Clay; Slip (0000.00.0001)

Kelsey Museum of Archaeology

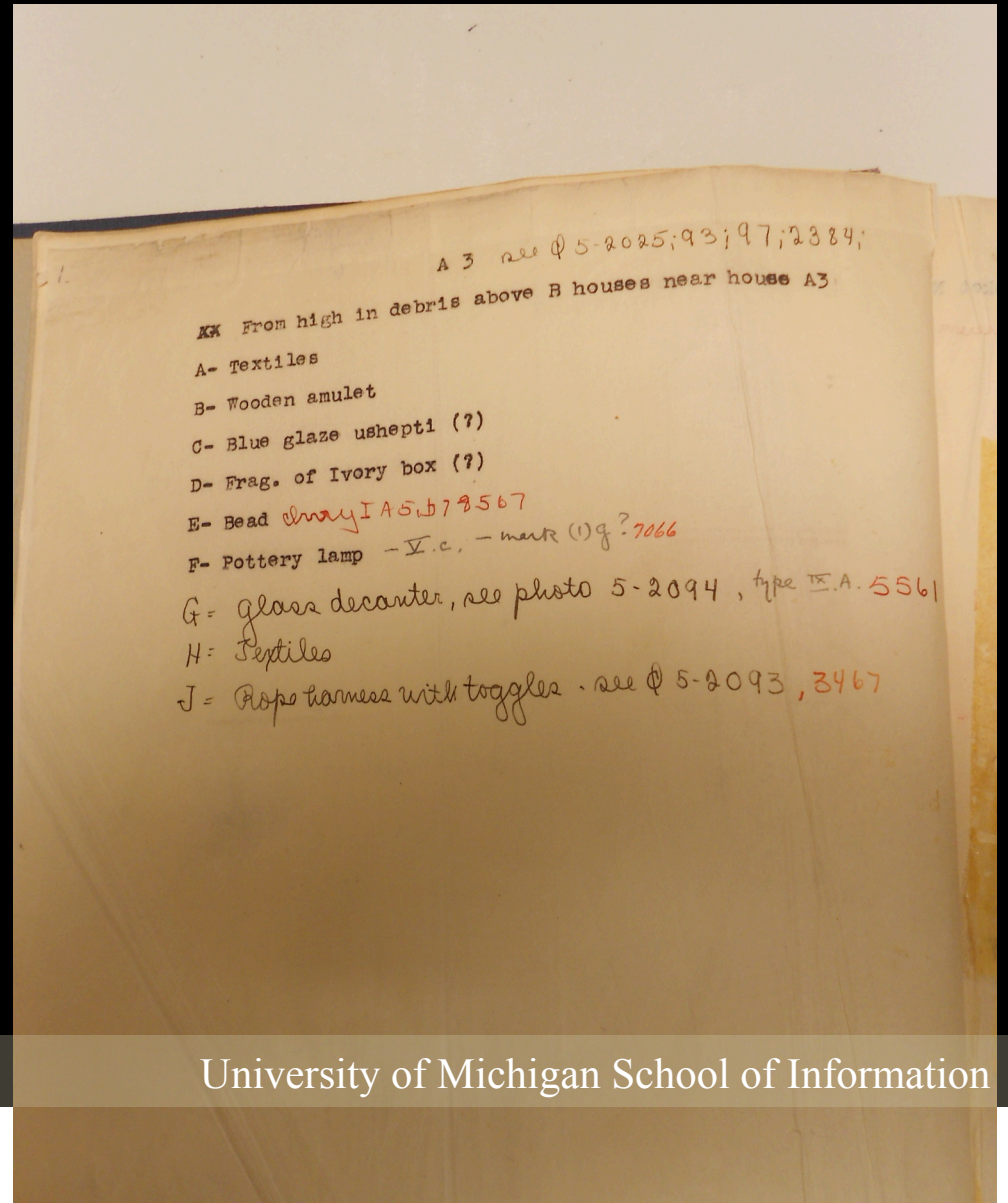
Accession Number	0000.00.0001
Site	Carthage
Function 1	Lamp
Function 2	Fragment
Material 1	Clay
Material 2	Slip
Source	Delattre, Pere
Provenance	Tunisia
Period	Christian
Negatives	L.73.18.18
Bibliographic References	Sidebotham, S. Lamps from Carthage in the Kelsey Museum, from Excavations at Carthage 1975, Vol 2, cat. no. 39

Collected by	When Collected	When Received	Page of Catalogue	Remarks
Delattre				Monogram "with this payment," said M. Boisselier, the Musée St. Sirois was started!
"				
"				For the various types of lamps, see "Les lampes antiques du Musée de Saint-Sirois de Carthage," par le R. P. Delattre. Lille. 1889
"				For the Christian lamps of the collection, see "Lampes chrétiennes de Carthage," par le R. P. Delattre. Lille. 1890
Delattre				

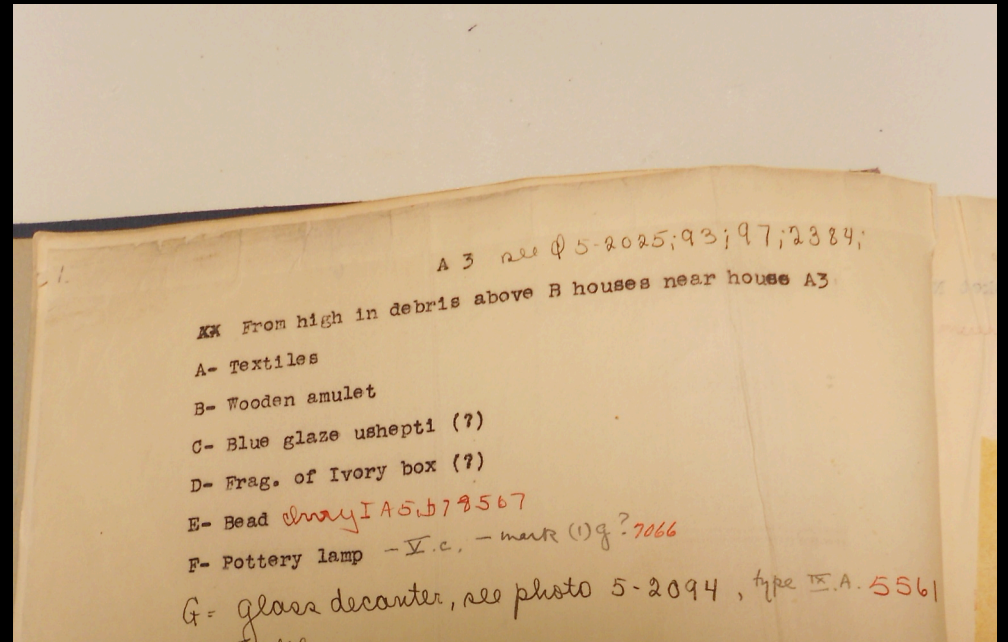
[Note]
 All the objects recorded as collected by, and received from, Rev. Pere Delattre, were duplicates of the Musée St. Sirois, at Carthage. They were sold to the University of Michigan by Pere Delattre, 2 March, 1893, the bill being in the name of his assistant, M. Boisselier. They were packed and brought to Ann Arbor by Fr. W. Kelsey, being received in October, 1893.

zotero

Excavated objects



Excavated objects



G- glass decanter, see photo 5-2094, type III A, 5561

Excavated objects

OK 5557	24 4029 G O	Small jar, dark green.
OK 5558	25 293 A E	" " , pale yellow.
OK 5559	24 5021 B H	Small toilet jar, almost colorless.
24 5007 F D OK 5560	a, b 24 5007 F C	" " " " " " , wood...
OK 5561	26 A3 G(A2)	Large glass flask, inverted piriform body.
5562	24 4029 A O	" " " " " "
OK 5563	26 BC61 D B	" " " " " "
OK 5564	25 5083 B Z	Smaller " " " "
OK 5565	25 5020 C A	" " " " " "

Excavated objects

bookmark:
<http://quod.lib.umich.edu/k/kelsey/x-0000.00.5561/1>

Karanis; Vessels; Flask ; Glass (0000.00.5561)

Kelsey Museum of Archaeology

Accession Number	0000.00.5561
Site	Karanis
Function 1	Vessels
Function 2	Flask
Material 1	Glass
Source	University of Michigan Excavations
Provenance	Egypt
Negatives	L.73.72
Bibliographic References	Harden, D. Roman Glass from Karanis. Ann Arbor, 1936. p. 195, no. 516.
Catalog Number	Harden 0516
Excavation Field Number	26-A3-G
Excavation Unit	A0003
Excavation Room	00G
Excavation Locus	R

Kelsey Museum Records

- Move from narrative to categorical description
- Emphasis on citations to publication
- Web of resources provides fuller picture, but access is limited

University of Michigan Herbarium

- Began in 1838 with botanical specimens from the first Geological Survey of Michigan
- Collections managed by a number of departments including Botany and the Zoology Museum
- First Herbarium director appointed 1921

The specimen



The label

THE UNIVERSITY OF MICHIGAN HERBARIUM
FLORA OF COLORADO

Carex chalciolepis Holm

Clear Creek County: Arapahoe National Forest
T5S, R73W, section 7.

Colorado 5, altitude ca. 3640 m.

Alpine; granitic fell slope.

Common; with long scales; staminate below.

Both this species and *Carex scopulorum*
here (R.T. 491), cespitose.

Bistorts also common in this site.

R. Tallent 490

8 August 1986

Locality

THE UNIVERSITY OF MICHIGAN HERBARIUM
FLORA OF COLORADO

Carex chalciolepis Holm

Clear Creek County: Arapahoe National Forest

T5S, R73W, section 7.

Colorado 5, altitude ca. 3640 m.

Alpine; granitic fell slope.

Common; with long scales; staminate below.

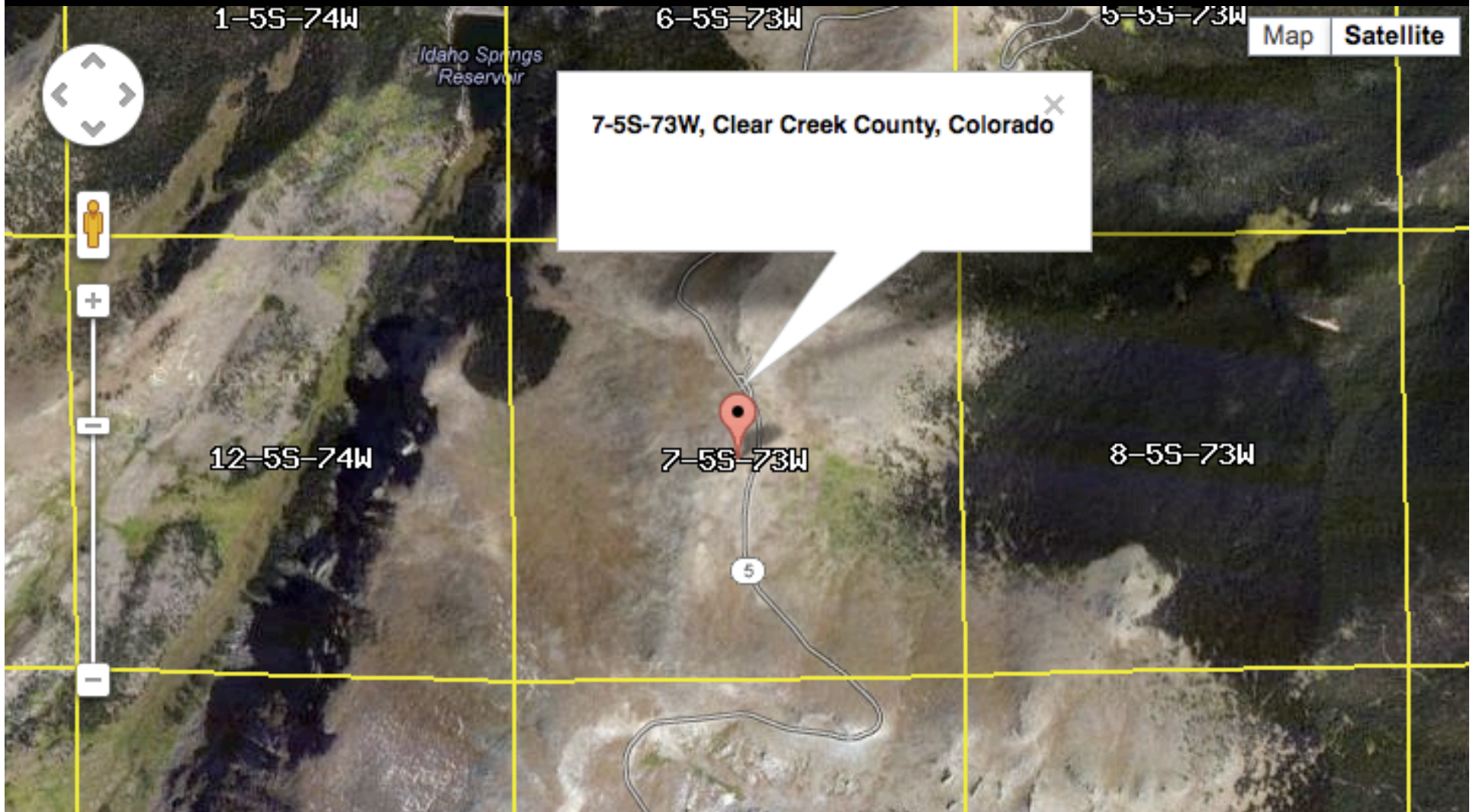
Both this species and *Carex scopulorum*
here (R.T. 491), cespitose.

Bistorts also common in this site.

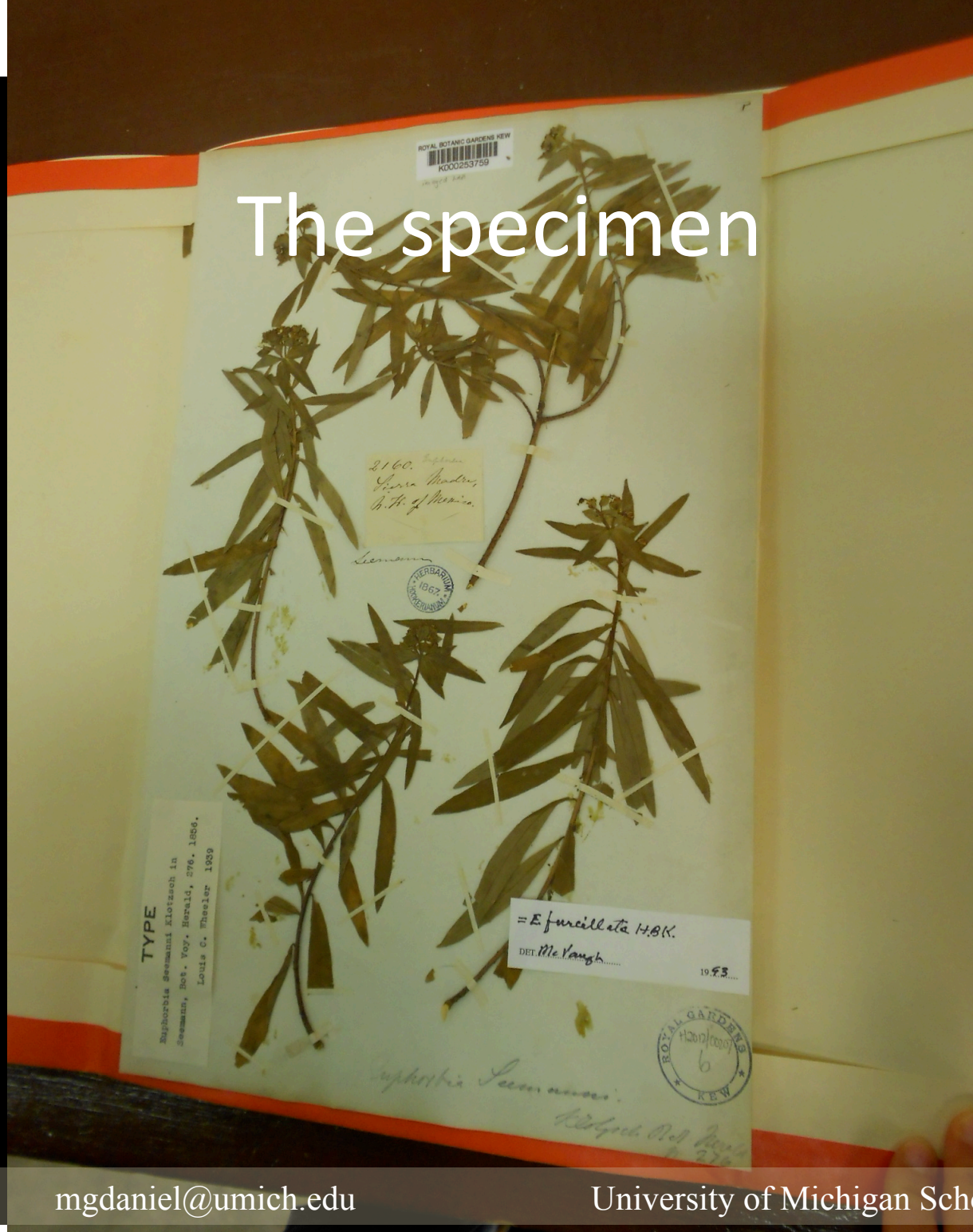
R. Tallent 490

8 August 1986

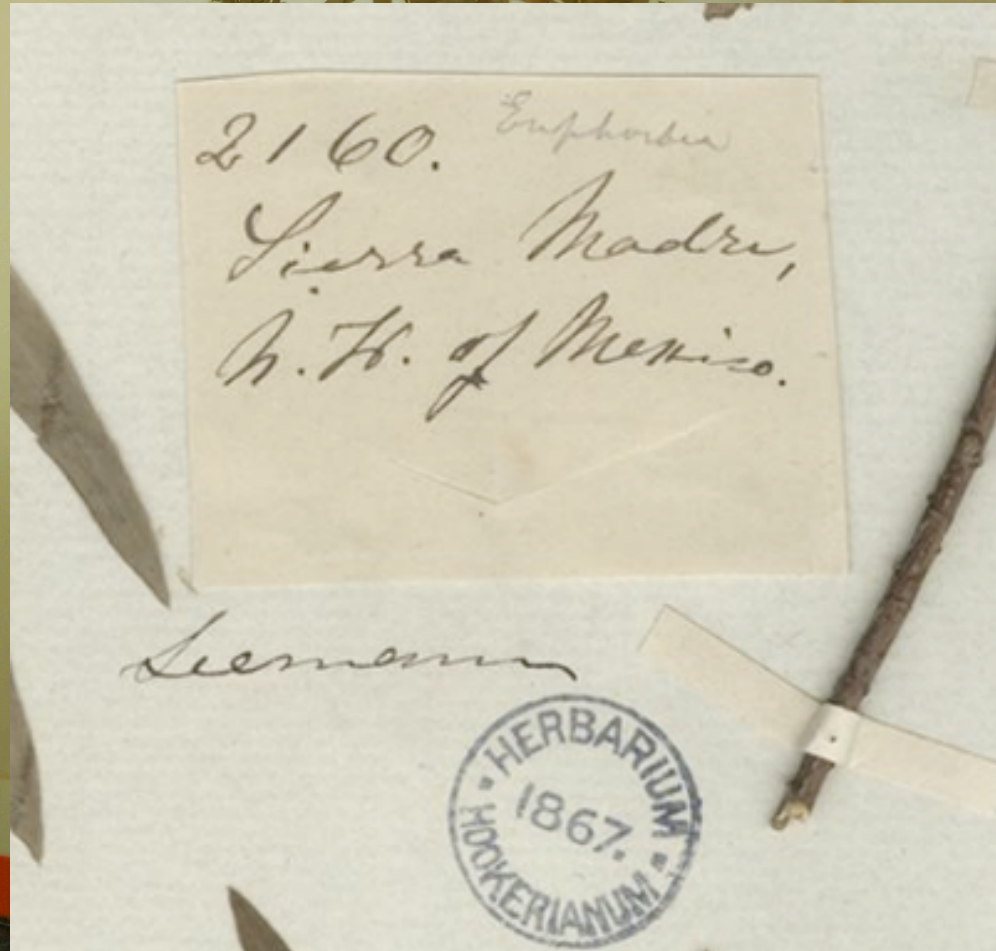
Locality



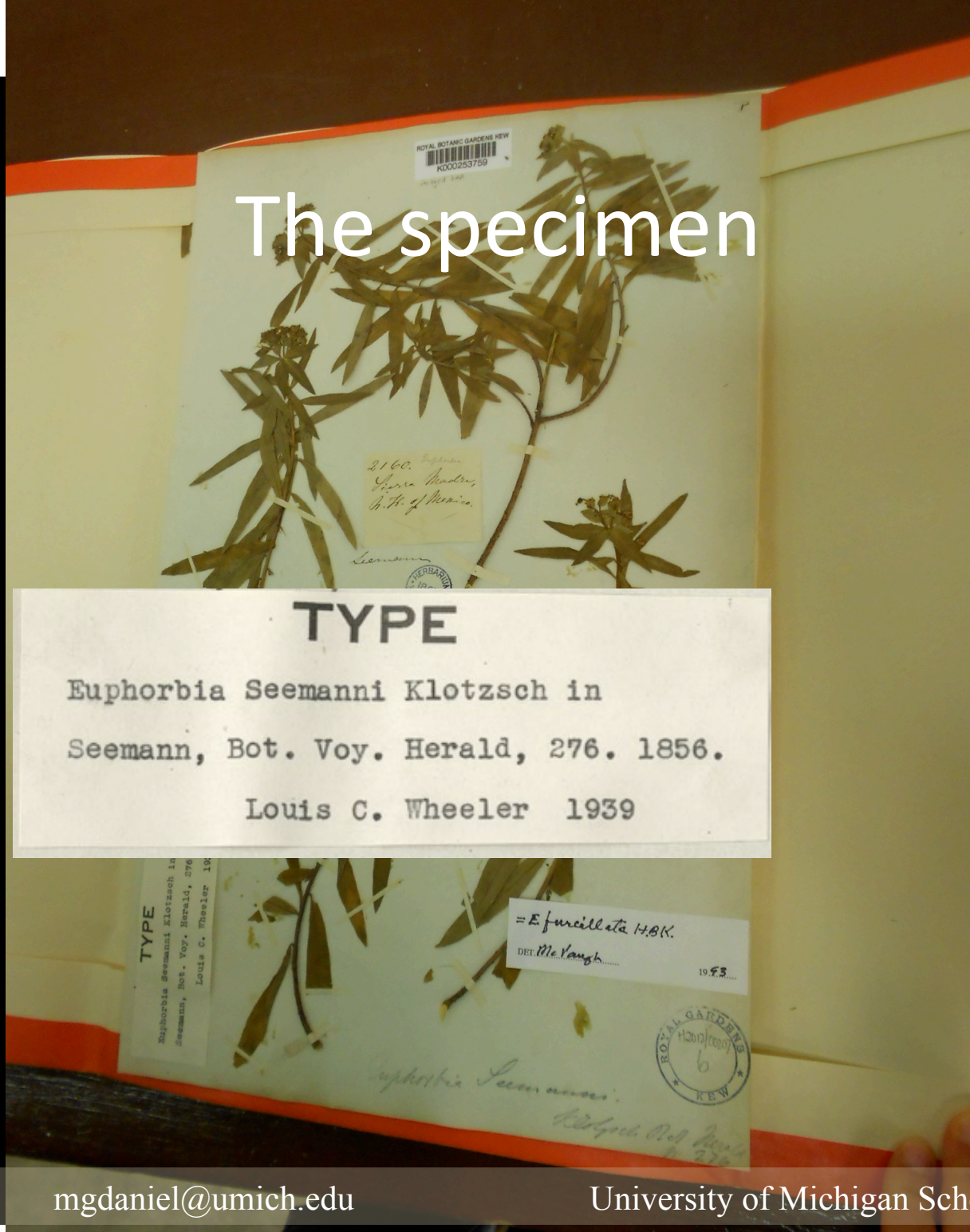
The specimen



The specimen



The specimen



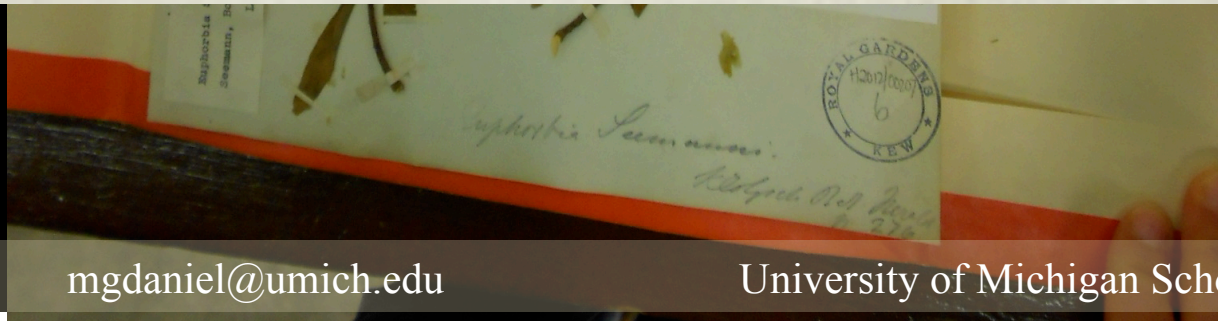
The specimen



= *E. furcillata* HBK.

DET. McVaugh.....

19.93.....




Digital representation

STOR HOME BROWSE ▾ MyPLANTS ABOUT COMMUNITY

JSTOR PLANT SCIENCE

SEARCH

RETURN TO SEARCH



[View larger image](#)

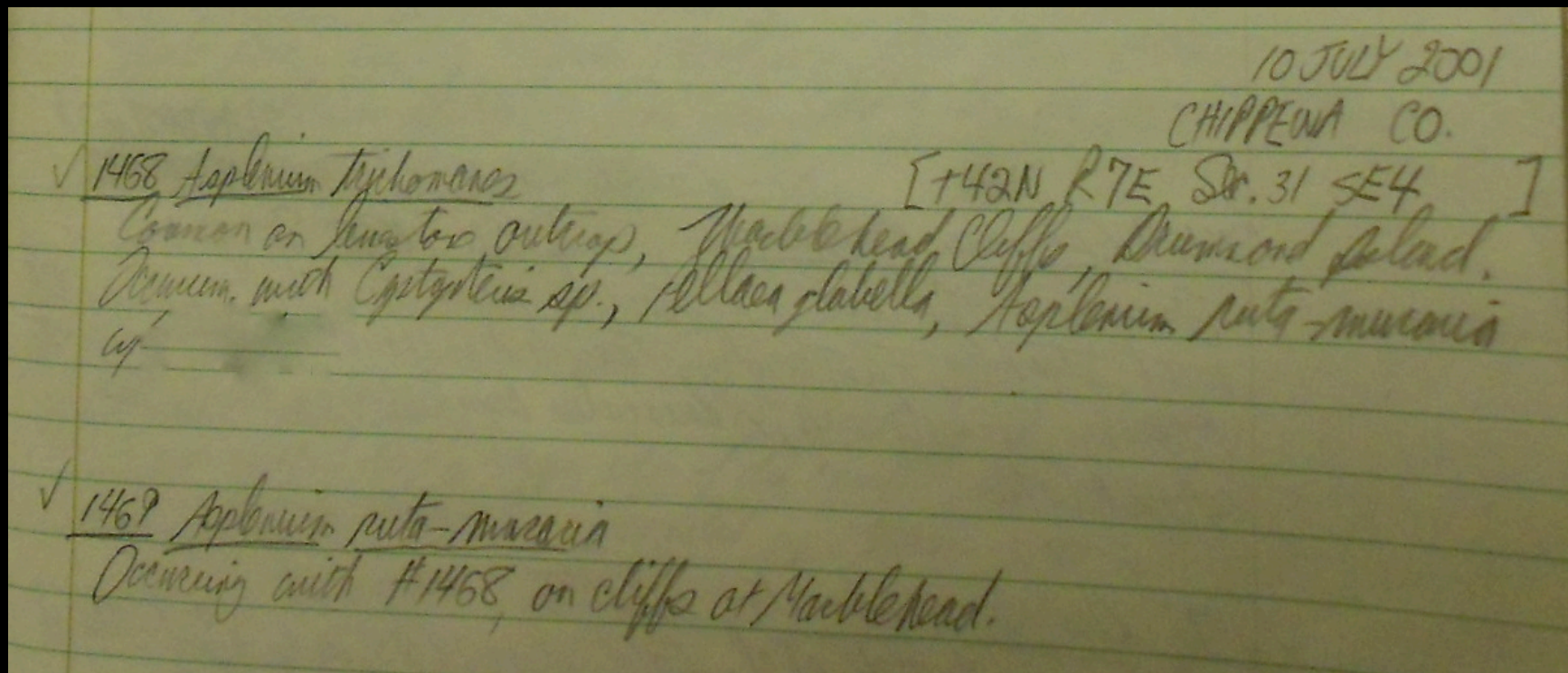
<<Prev ... Next>>

Type of *Euphorbia seemannii* Klotzsch in Seem. [family EUPHORBIACEAE]

PDF VIEWER TAGS ADD DETERMINATION SLIP

Herbarium	Royal Botanic Gardens, Kew (K), K000253759
Collection	Type Specimens
Resource Type	Specimens
Collector	Seemann, #2160
Locality	Sierra Madre
Country	Mexico Northwest
Identifications	Euphorbia furcillata Kunth [family EUPHORBIACEAE] (stored under name); Verified by McVaugh, 1993 Type of Euphorbia seemannii Klotzsch in Seem. [family EUPHORBIACEAE]; Verified by Wheeler, L., 1939 Euphorbia esuliformis Nees & Schauer [family EUPHORBIACEAE];
Pages	1

The field notebook (kept by researcher H-8)



Michigan Flora record

Asplenium ruta-muraria L.

Common Name: WALL-RUE

Coefficient of Conservatism: 10

Coefficient of Wetness: 5

Wetness Index: UPL

Physiognomy: Nt Fern

Status: E

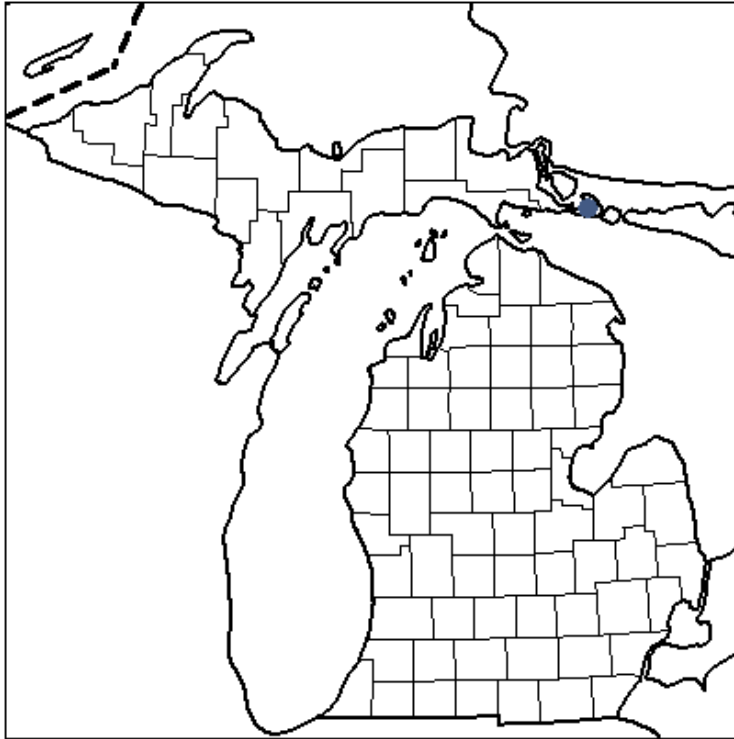
Dry dolomite cliffs; known in Michigan only from cliffs on the shore of Drummond Island, where collected as early as 1839. See Drife & Drife (1990) for a discussion of Farwell's mislabeled Keweenaw Co. collection.



ex W.H. Wagner slide collection

Michigan Flora record

Locations



Chippewa County

Only on Drummond Island

Citation:

MICHIGAN FLORA ONLINE. A. A. Reznicek, E. G. Voss, & B. S. Walters. February 2011. University of Michigan. Web. June 26, 2012.
<http://www.michiganflora.net/species.aspx?id=202>.

Herbarium records

- The specimen bears its own record
- Record shows a lineage of expert judgment
- Collection is largely not databased
- Digitization takes place in batches, prioritized by research value and funding opportunities

Comparison of Kelsey and Herbarium

- Both museums shaped by sociotechnical changes in collector/ user communities
- Location of information
 - Herbarium retains information with specimen
 - Kelsey retains information in multiple systems
- Content of representation
 - Variable at the Kelsey, depending on records consulted, while largely consistent at the Herbarium
- Electronic access
 - Basic information available for all accessioned objects at Kelsey
 - Only a small portion of Herbarium collections represented online

Discussion

- Implications
 - Information and object management
 - Use of collections
 - Knowledge production based on collections
- Continuing work
 - Interviews with staff to learn about collection management and representation
 - Interviews with researchers to discover how objects and records are used

Thank you.